

Pressure regulators

Series MC

Ports G1/4, G3/8 and G1/2
Modular



The Series MC pressure regulators are available with ports G1/4, G3/8 and G1/2.

Versions with secondary pressure relieving are usually available and all regulators can be panel mounted.

3

TREATMENT

GENERAL DATA

Construction	modular, compact, diaphragm type			
Materials	zama, brass, NBR, technopolymer			
Ports	G1/4	G3/8	G1/2	
Weight	kg	0,323	0,644	0,624
Pressure gauge ports	G1/8			
Mounting	in-line, wall or console mounting (in any position)			
Operating temperature	-5°C ÷ 50°C (with the dew point of the fluid lower than 2°C at the min. working temperature)			
Finishing	enamelled			
Inlet pressure	0 ÷ 16 bar			
Outlet pressure	0.5 ÷ 10 bar or 0 ÷ 4 bar			
Nominal flow	see graph			
Secondary pressure relieving	standard			

CODING EXAMPLE

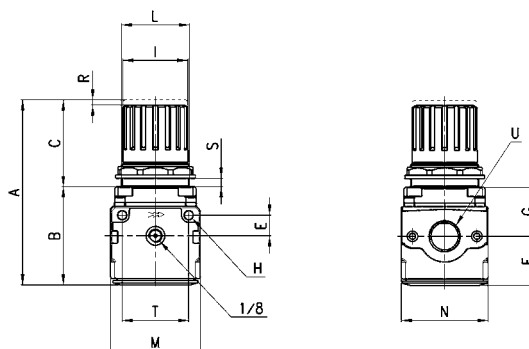
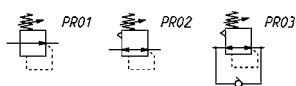
MC	2	02	-	R	0	0
----	---	----	---	---	---	---

MC	SERIES
2	SIZE: 1 = G1/4 2 = G3/8 - G1/2
02	PORTS 04 = G1/4 38 = G3/8 02 = G1/2
R	R = REGULATOR
0	OPERATING PRESSURE: 0 = 0,5 ÷ 10 (standard) 1 = 0 ÷ 4 2 = 0 ÷ 2 (only G1/4) 7 = 0,5 ÷ 7 (only G1/4)
0	DESIGN TYPE: 0 = self-relieving (standard) 1 = non-relieving 5 = precise relieving



Pressure regulators Series MC

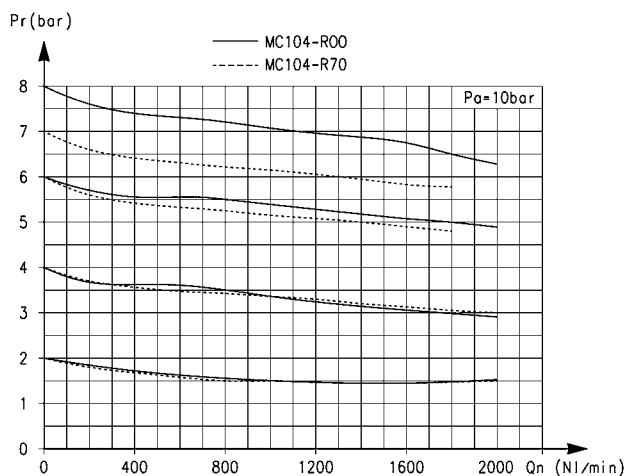
PR01 = regulator without relieving
 PR02 = regulator with relieving
 PR03 = regulator with relieving and by-pass valve



DIMENSIONS

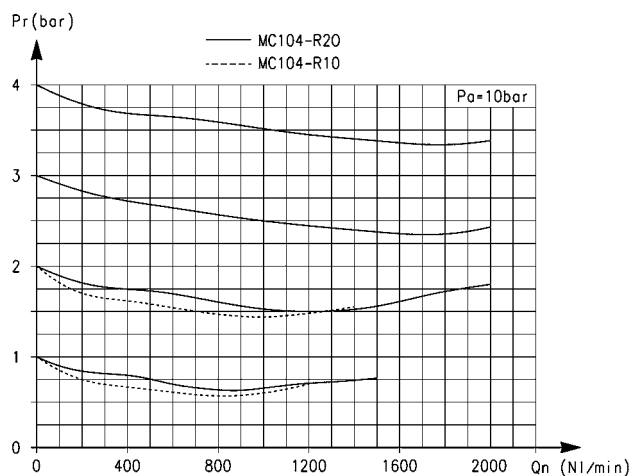
Mod.	A	B	C	E	F	G	H	I	L	M	N	R	S	T	U
MC104-R00	94	56	38	11	28,5	27,5	4,5	28	30X1,5	45	45	3	0+6	35	G1/4
MC238-R00	127	67	60	14	34	35	5,5	45	47X1,5	62	60	3,5	0+9	46	G3/8
MC202-R00	127	67	60	14	34	35	5,5	45	47X1,5	62	60	3,5	0+9	46	G1/2

FLOW DIAGRAMS



Flow diagrams for models: MC104-R00 and MC104-R70

Pa = Inlet pressure
Pr = Regulated pressure
Qn = Flow



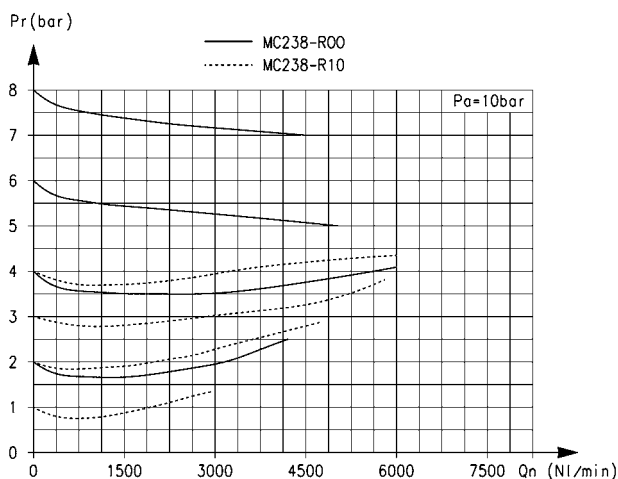
Flow diagrams for models: MC104-R10 and MC104-R20

Pa = Inlet pressure
Pr = Regulated pressure
Qn = Flow

3

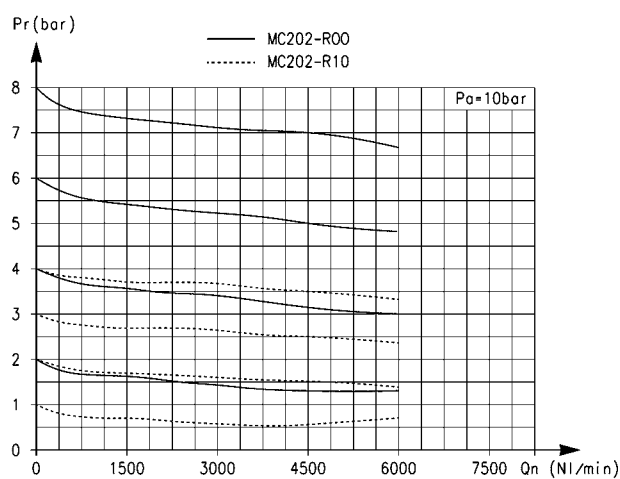
TREATMENT

FLOW DIAGRAMS



Flow diagrams for models: MC238-R00 and MC238-R10

Pa = Inlet pressure
Pr = Regulated pressure
Qn = Flow



Flow diagrams for models: MC202-R00 and MC202-R10

Pa = Inlet pressure
Pr = Regulated pressure
Qn = Flow