

# Pressure microregulators Series T

Ports G1/8 and G1/4

- » Extreme lightness in weight
- » Compact
- » In-line or panel mounting



Series T pressure regulators are available with G1/8 and G1/4 brass connections.

A self-relieving piston has been incorporated into the design to allow decreasing adjustments.

Non-relieving versions are also available.

All models are equipped with a valve enabling fast draining (VS) which is useful when a regulator should be inserted between the valve and cylinder (or capacity) without any negative influence on the exhaust.

## GENERAL DATA

Construction	piston
Materials	technopolymer body and piston, stainless steel spring, brass inserts, NBR O-ring and poppet
Ports	G1/8 - G1/4
Weight	g 95
Pressure gauge ports	G1/8
Mounting	in-line or panel mounting (in any position)
Operating temperature	-5°C ÷ 50°C (with the dew point of the fluid lower than 2°C at the min. working temperature)
Inlet pressure	0 ÷ 12 bar
Outlet pressure	0, 5 ÷ 10 bar
Nominal flow	see graphs
Secondary pressure relieving	standard

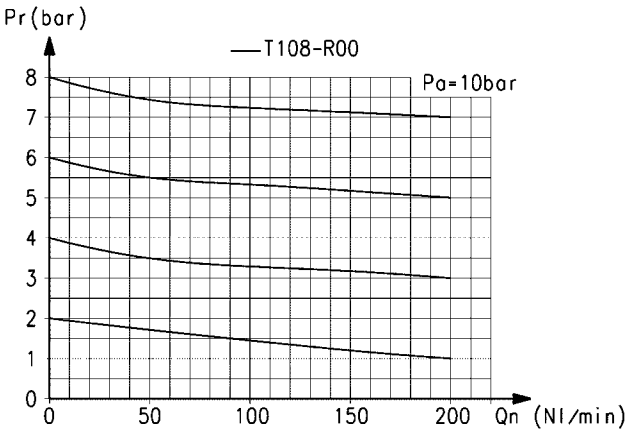
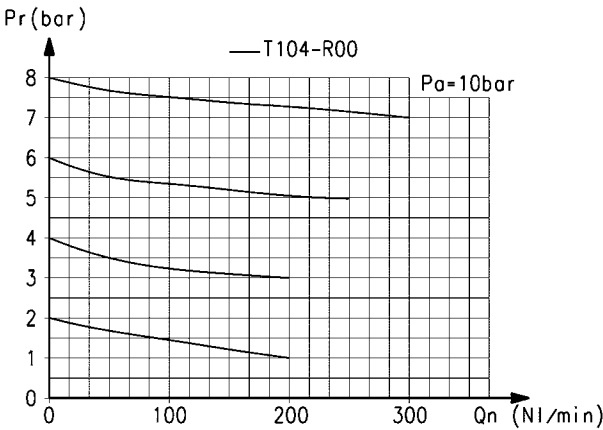
CODING EXAMPLE

T	1	08	-	R	0	0
---	---	----	---	---	---	---

T	SERIES
1	SIZE
08	PORTS: 08 = G1/8 04 = G1/4
R	REGULATOR
0	OPERATING PRESSURE: 0 = 0,5 ÷ 10 1 = 0 ÷ 4 2 = 0 ÷ 2 7 = 0 ÷ 7 (standard)
0	DESIGN TYPE: 0 = self-relieving 1 = non relieving

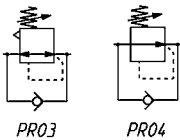
FLOW DIAGRAMS

New



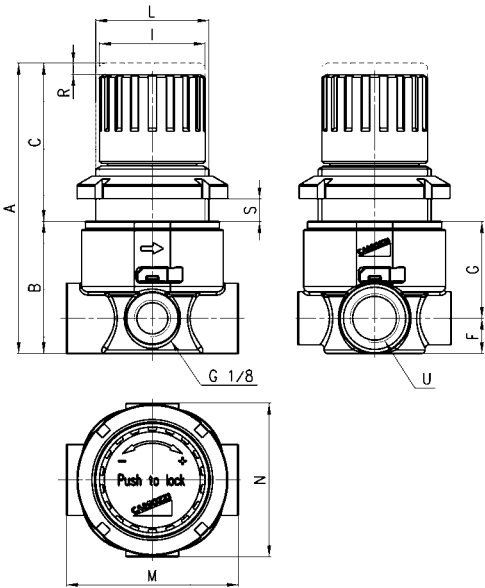
Pressure microregulator Series T

New



PR03 = regulator with relieving and by-pass valve

PR04 = regulator without relieving and with by-pass valve



DIMENSIONS

Mod.	A	B	C	F	G	I	L	M	N	R	S	U
<b>T108-R00</b>	77	35	42	9,5	25,5	28	M30X1,5	46	41	3	7	G1/8
<b>T104-R00</b>	77	35	42	9,5	25,5	28	M30X1,5	46	41	3	7	G1/4